



AMAGAMES



PALOURDE



Content:

2 rulebooks (Fr/En), 1 title card and 59 cards:

"Basket"



x5

"Clam"



x20

"Rake"



x4

"Crab"



x4

"Shrimp"



x4

"Bird"



x4

"Beach"



x6

"Shell"



x6

"High tide"



x3

"Storm
warning"



x1

"Basket"



x1

"Golden
Clam"



x1

Setup:

Each fisherman picks a "Basket" card. Shuffle and place the remaining cards face down to form the "Beach."



Welcome to the beach where the "Golden Clam" contest is taking place! The tide is low, the sun is shining, in short, the conditions are perfect for fishing! All the fishermen are gathered. Their goal: to find and collect as many clams as possible before the tide comes in.

Ready to take on the challenge? Grab your baskets and rakes, because the tide won't wait!



The game:

The fishermen take turns flipping two cards of their choice to make them visible to everyone. The youngest fisherman starts:

- If they form a pair (see Pairs),
- If an event card is flipped (see Events),
- If the cards do not match, they are turned face down and returned to their original positions.

The fishing ends when all three "High Tide" cards are revealed. The fisherman with the most clams wins the Golden Clam!



The Pairs:



The fisherman wins the pair and puts the clams in their basket.



The fisherman wins the clam, discards* the rake, and plays again.



The fisherman can steal a clam from a fisherman of his choice. The crabs are then discarded.

*Discard: Remove from the game

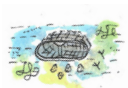


The fisherman has the right to look at a card secretly. The shrimp are then discarded. The next fisherman cannot look at the card that was seen secretly.



Watch out, the birds eat the clams, crabs, shells, and shrimp! Discard both cards.

Please note: Two "Beach" and/or "Shell" cards do not form a pair.



The Events:



If the "Basket Overboard" card is flipped, you overturn your basket! Discard the card as well as your clams. In your misfortune, you are allowed to play again...

If the "Storm Warning" card is flipped, beware, the wind rises! Discard the card and shuffle all the cards from the "Beach"!

If a "High Tide" card is flipped, it stays face-up on the "Beach" and the turn passes to the next fisherman.

Credits

Palourde is an Amagames game.
Find the rules in a video at amagames.fr.

Design and Illustrations:



Xavier Delanoue



First players:

Karolina Delanoue, Pascale and Joël Delanoue,
Families Thierry and Cuniot, Armand Serin.

Acknowledgements:

A big thank you to my family for their invaluable support and to you, clam diggers, for making Palourde possible. Your trust touches me deeply.